



Iftin Charter School

5465 El Cajon Blvd. San Diego CA 92115 (619)265-2411

School Site Council (SSC)/ELAC AGENDA

Regular Meeting

Monday, December 06, 2021 at 8:30 a.m.

Room 9B

“Providing a strong educational foundation to all students who are in need of direction and support in learning English and finding their way in a new culture.”

Mission: Iftin Charter School provides students in grades K-8 an academically rigorous, common core aligned curricula, supplemented with a technology intensive program in a student centered, safe and caring learning environment. ICS addresses the needs of a diverse group of students, their families and communities by building on the strengths of the students’ cultural heritage and life experiences. ICS students are educated and enlightened to become successful, lifelong learners and valuable members of the global community.

PUBLIC HEARING Only for items on this Regular Agenda This is the appropriate point in the meeting for any members of the audience to speak on matters only on this agenda. If they wish to address the Iftin- SSC, they are requested, prior to the meeting, to submit to the Secretary of the SSC their names and the subject on which they wish to speak. Time is limited to three minutes for each individual. Individuals wishing to comment on items on the present agenda may do so during this portion of the meeting. Complaints about specific personnel are not appropriate for public session. Please submit any complaints to the Board Secretary in writing.

WELCOME GUESTS / CALL TO ORDER 8:30 A.M

SSC

- Educator Effectiveness Grant Plan
- Safe Return to In-Person Instruction and Continuity of Services Plan

ELAC

- ELPAC/ Reclassification process
- Needs Assessment- DnA (former EADMS)
- Importance of Attendance

Please, review attachments:

1. Iftin Charter School Educator Effectiveness Block Grant 2021 Spending Plan for the 2021-2026 School Fiscal Years



Iftin Charter School

2. American Rescue Plan Act

Elementary and Secondary School Relief Fund (ESSER III)
Safe Return to In-Person Instruction
Local Educational Agency Plan Template

3. COVID-19 SAFETY PLAN IN-PERSON INSTRUCTION

The next regularly scheduled School Site Meeting Scheduled Friday, January, 08, 2022.

ADJOURN

In compliance with the Americans with Disabilities Act, if you need special assistance to participate in this meeting, please contact the Office of Iftin Charter School at (619)265-2411. Notification of 48 hours prior the School to make reasonable arrangements to ensure accessibility to that meeting (28 CFR 35.102.35.104



Enlightenment through Academic Rigor Cultural Literacy and Compassion

2021-22

COVID-19 SAFETY PLAN

IN-PERSON INSTRUCTION

This is a working document and information may be subject to changes.

I. Overview

We look forward to welcoming back our students for full day 5-day in-person instruction for the 2021-22 school year. Families needing an alternative virtual program for their children, ICS will offer independent study program.

This document continues to evolve and has been revised based on the most updated public health guidance provided by the California Department of Public Health for the purpose of returning to full, in-person learning starting on the first day of school, August 30, 2021, for the 2021-22 school year. The Safety plan is comprehensive and continues to be fluid, focused on three priorities:

1. Keep students, staff, and the community safe through strong health and safety protocols grounded in California Department of Public Health's guidance;
2. Be responsive to the needs of parents who desire a high-quality learning experience for their children, preparing students for success;
3. Provide trainings and support. Timely, frequent communications and transparency with all stakeholders.

*This document was developed with the most current information known at the time and will be updated as new guidance is received.

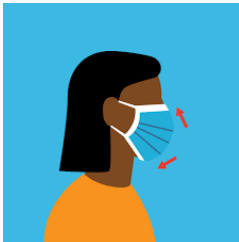
II. SAFETY MEASURES

The health and safety of our students, staff, and families is the top priority when implementing in-person instruction. We will continue to implement health and safety protocols in alignment with the California Department of Public Health's (CDPH) *COVID-19 Public Health Guidance for K-12 Schools in California, 2021-22 School Year*. That document can be found [here](#).

The foundational principle of this guidance is that all students must have access to safe and full in-person instruction and to as much instructional time as possible. In California, the path to safe and full in-person instruction and minimizing missed school days in an ongoing basis, universal masking enables no minimum physical distancing, allowing all students access to full in-person learning, keeping students in school. Recent evidence indicates that in-person instruction can occur safely without minimum physical distancing requirements when other mitigation strategies (e.g., masking) are fully implemented. This is consistent with [CDC K-12 School Guidance](#).

1. MASKS

Per CDPH, masks are one of the most effective and simplest safety mitigation layers to prevent in-school transmission of COVID-19 infections and to support full time in-person instruction.



- All students are required to mask indoors, with exemptions per CDPH face mask guidance. Adults are required to mask when sharing indoor spaces with students.
- Masks are optional outdoors. However, people who are not fully vaccinated are encouraged to wear a mask in crowded outdoor settings or during activities that involve sustained close contact (including high-risk contact sports) with other people who are not fully vaccinated per CDPH.
- “Face covering” means a surgical mask, a medical procedure mask, a respirator, or a tightly woven fabric or non-woven material of at least two layers. A face covering has no visible holes or openings and must cover the nose and mouth. A face covering does not include a scarf, ski mask, balaclava, bandana, turtleneck, collar, or single layer of fabric.
- Persons exempted from wearing a face covering due to a medical condition, must wear a non-restrictive alternative, such as a face shield with a drape on the bottom edge, as long as

- condition permits it. Parents or guardians can work with the site administrator to begin the process to discuss accommodations.
- ICS will continue to implement local protocols to enforce the mask requirements.
- In limited situations where a face covering cannot be used for pedagogical or developmental reasons, (e.g., communicating or assisting young children or those with special needs) staff can use a face shield with a drape (per CDPH guidelines) instead of a face covering while in the classroom as long as the wearer maintains physical distance from others. Staff must return to wearing a face covering outside of this setting.
- Per CDPH, a cloth face covering may be removed for meals, snacks, or when it needs to be replaced.
- Appropriate face coverings and face shields with drapes are available for staff and students. Personal Protective Equipment (PPE) and additional supplies are available.
- CDPH will continue to assess conditions on an ongoing basis, and will determine no later than November 1, 2021, whether to update mask requirements or recommendations.

2. PHYSICAL DISTANCING

- Recent evidence indicates that in-person instruction can occur safely without minimum physical distancing requirements when other mitigation strategies (e.g., masking) are implemented. This is consistent with CDC K-12 School Guidance.
- Per CDPH and Cal/OSHA, physical distancing and desk barriers are no longer a requirement. When masks need to be removed while eating or drinking, ICS will maximize physical distance as much as possible.

3. VENTILATION RECOMMENDATIONS

- Air Conditioning Systems.
- Portable high-efficiency air purification HEPA units are provided in all classrooms and workspaces.

4. RECOMMENDATIONS FOR STAYING HOME WHEN SICK & GETTING TESTED

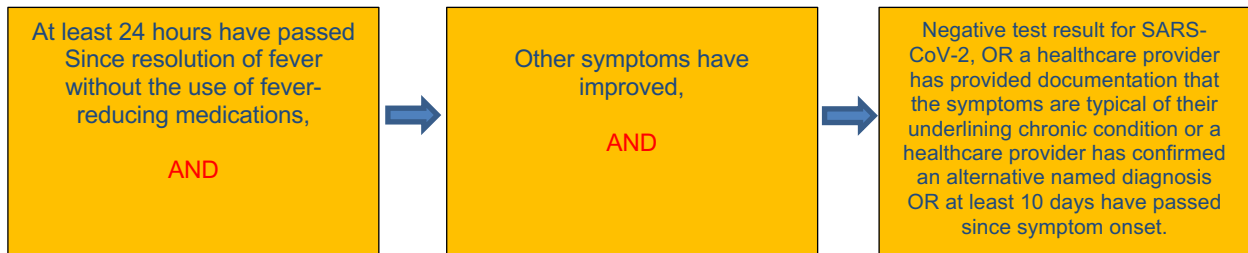
ICS will follow the strategy for Staying Home when Sick and Getting Tested from the CDC.



- Getting tested for COVID-19 when symptoms are consistent with COVID-19 will help with rapid contact tracing and prevent possible spread in school.
- Students, teachers, and staff who have symptoms of infectious illness, such as influenza (flu) or COVID-19, should stay home and be referred to their healthcare provider for testing and care. Staying home when sick with COVID-19 is essential to keep COVID-19 infections out of schools and prevent spread to others. It also is essential for people who are not fully vaccinated to quarantine after a recent exposure to someone with COVID-19.
- City Heights Family Health Center of San Diego across from the school provides FREE COVID-19 Testing. Visit the FHCS website for information: <https://www.fhcsd.org/community-clinic-offers-covid-testing/>

CDPH Return to School Criteria

ICS students and staff with symptoms may not return to campus in person until they have met the CDPH criteria to return to school for those symptoms:



ICS will follow the San Diego County Office of Education Symptom and Isolation Tree.

<https://covid-19.sdcoe.net/portals/covid-19/Documents/Health%20Practices/COVID-19-Decision-Tree.pdf>

5. SCREENING TESTING/ RECOMMENDATIONS

ICS will ensure that students and staff who have symptoms of COVID-19 or have been exposed to someone with COVID-19 are referred for testing.

FHCSD provides FREE COVID-19 Testing throughout San Diego County. Visit the FHCSD for information. <https://www.fhcsd.org/community-clinic-offers-covid-testing/>

ICS will also provide free testing information to students and staff that are offered by community organizations and the San Diego County Health Care Agency.

6. CASE REPORTING, CONTACT TRACING & INVESTIGATION

If a positive COVID-19 case occurs at a school site, ICS liaison will contact public health to report the case to investigate and initiate contact tracing immediately, and the ICS COVID-19 Designee will coordinate a response with San Diego County Health COVID Safe Schools Response Team. ICS staff will notify students, staff, and families who have been identified as a close contact and potentially exposed to COVID-19 and provide health recommendations and guidance from the health agency.

ICS COVID-19 Designee will report the case to the health care agency within 24 hours.

Schools are authorized under the Family Educational Rights and Privacy Act (FERPA) to disclose personally identifiable information without parental consent to local health departments regarding COVID-19 testing and cases. Due to privacy and confidentiality issues, details of positive cases will not be disclosed to the public.

ICS COVID-19 Liaison:

Abdi Mohamud, School Operations Manager
(619) 265-2411 x 3065 Mohamud@iftincharter.net

ICS COVID-19: Bulletin: ICS is committed to providing accurate and transparent information regarding COVID-19 information and update including cases on its school campuses, while also maintaining privacy and confidentiality for students and staff.

7. QUARANTINE RECOMMENDATIONS

For Vaccinated Close Contacts

For individuals who are vaccinated, ICS follows the [CDPH Fully Vaccinated People Guidance](#) regarding quarantine.

8. QUARANTINE RECOMMENDATIONS

For unvaccinated students for exposures when both parties were wearing a mask, as required.

ICS will follow the quarantine process established by CDPH guidance in conjunction with consultation from the local health care agency.

When both parties were wearing a mask in any school setting in which students are supervised by school staff (including indoor or outdoor school settings, including on buses operated by public and private school systems), unvaccinated students who are close contacts (more than 15 minutes over a 24-hour period within 0-6 feet) may undergo a modified quarantine as follows. They may continue to attend school for in-person instruction if they:

- ✓ Are asymptomatic;
- ✓ Continue to appropriately mask, as required;
- ✓ Undergo at least twice weekly testing during the 10-day quarantine; and
- ✓ Continue to quarantine for all extracurricular activities at school, including sports, and activities within the community setting

9. QUARANTINE RECOMMENDATIONS

For unvaccinated student close contacts who were not wearing masks or for whom the infected individual was not wearing a mask during the indoor exposure; or unvaccinated students.

ICS will follow the quarantine process established by CDPH guidance in conjunction with consultation from the local health care agency.

For these contacts, those who remain asymptomatic, meaning they have NOT had any symptoms, may discontinue self-quarantine under the following conditions:

- Quarantine can end after Day 10 from the date of last exposure without testing; OR
- Quarantine can end after Day 7 if a diagnostic specimen is collected after Day 5 from the date of last exposure and tests negative.

To discontinue quarantine before 14 days following last known exposure, asymptomatic close contacts must:

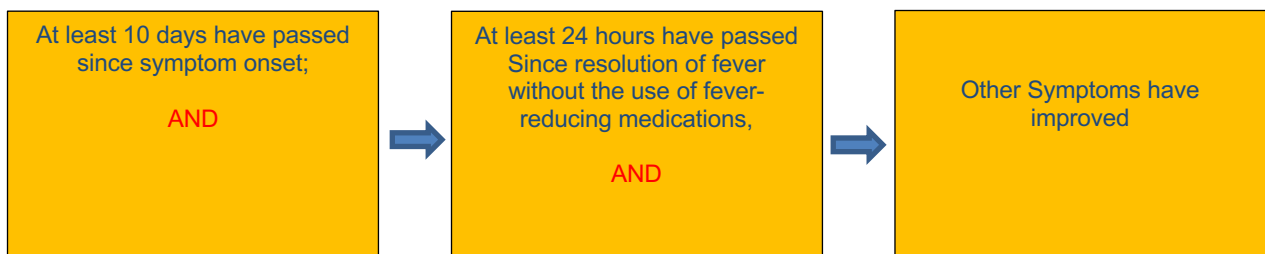
- i. Continue daily self-monitoring for symptoms through Day 14 from last known exposure;
AND
 - ii. Follow all recommended non-pharmaceutical interventions (e.g., wearing a mask when around others, hand washing, avoiding crowds) through Day 14 from last known exposure.
- b. If any symptoms develop during this 14-day period, the exposed person must immediately isolate, get tested and contact their healthcare provider with any questions regarding their care.

10. ISOLATION RECOMMENDATIONS

For both vaccinated and unvaccinated persons, ICS will follow the [CDPH Isolation Guidance](#) for those diagnosed with COVID-19.

Isolation- Symptomatic

CDPH recommends a symptom-based strategy to determine the duration of isolation for people with COVID-19 who are **symptomatic**, meaning they have symptoms. Persons with COVID-19 who have symptoms and were instructed to care for themselves at home may discontinue self-isolation under the following conditions:



Isolation- Asymptomatic

For persons with COVID-19 who are asymptomatic, meaning that they have NOT had any symptoms, CDPH recommends that these individuals be instructed to care for themselves at home. They may discontinue isolation under the following conditions:

At least 10 days have passed since the date of the first positive COVID-19 diagnostic test.

If they develop symptoms, then the strategies for discontinuing isolation for symptomatic should be used.

11. HAND HYGIENE RECOMMENDATIONS

Students and staff are instructed and reminded in proper handwashing & sanitizing techniques, and to avoid contact with one's eyes, nose, and mouth, and covering coughs and sneezes. Handwashing/sanitizing will be required throughout the day: upon arrival to school, before and after recess, lunch, PE, and when returning to class from any shared area and in class as needed.



- Students and staff are reminded to wash their hands for 20 seconds with soap, rubbing thoroughly after application.
- Students may bring a personal hand sanitizing bottle for their personal use.
- Sanitizing stations have been installed in all classrooms and shared school spaces alcohol-based hand sanitizers.
- Additional custodial staff has been hired to assist with the cleaning of frequently touched objects.
- All employees are encouraged to keep their work spaces clean, and teachers teach the habit of cleanliness to students.

12.CLEANING RECOMMENDATIONS

- Cleaning and Disinfecting all areas of the facility.
- Classrooms are thoroughly cleaned daily.
 - If a facility has a sick person with COVID-19, ICS will clean AND disinfect the spaces occupied by that person during that time.
- Custodial staff and any other workers who clean and disinfect are equipped with proper personal protective equipment, including gloves, eye protection, respiratory protection, and other appropriate protective equipment as required by the product instructions.

13. FOOD SERVICE RECOMMENDATIONS

- ICS will maximize physical distance as much as possible while eating.
- ICS Food Services will clean frequently touched surfaces. Surfaces that come in contact with food should be washed, rinsed, and sanitized before and after meals. Food Services staff will continue to wear masks when cooking and preparing meals for cafeteria service.
- Given very low risk of transmission from surfaces and shared objects, there is no need to limit food service approaches to single use items and packaged meals per CDPH.
- Student Breakfast will be served from the cafeteria starting at 7:30am. Please visit your child's school website for information about your child's lunch schedule.

14. VACCINATION/VERIFICATION

Vaccination Mandate

ICS employees must verify vaccine status. **Unvaccinated** or incompletely vaccinated employees are **required to undergo** diagnostic screening testing at least once a week.

ICS will refer to the CDC vaccine verification recommendations.

Cal/OSHA and CDPH assert that vaccination is effective at preventing COVID-19, protecting against both transmission and serious illness or death. CDPH strongly recommends the COVID-19 vaccination for all eligible people in California, including teachers, staff, students, and adults.

To access vaccination opportunities, visit

https://www.sandiegocounty.gov/content/sdc/hhsa/programs/phs/community_epidemiology/dc/2019-nCoV/vaccines.html

Free COVID-19 vaccines are available in various settings.

15. COVID-19 SAFETY PLANNING

In order to build trust in the school community and support successful return to school, ICS provides transparency to the school community regarding the school's safety plans. ICS's safety plan is posted on the district website, communicating the safety measures in place. Trainings are provided to staff and parents by the School's COVID-19 Designees and site administrators.

THIS DOCUMENT SERVES AS THE COVID-19 SAFETY PLAN.

ADDITIONAL CONSIDERATIONS

VISITOR RECOMMENDATIONS

ICS is proud of our connection with families, and we wish to emphasize an interest in creating family engagement opportunities when safe to do so.

Visitors are individuals who need to enter a school office for a clear, temporary purpose such as registering a child for school, picking up a child, or another specific purpose or attending a meeting.

All visitors are required to wear a mask while on school grounds.

ICS encourages parents to conduct as much business as possible through phone, email or zoom. IEPs and parent conferences are encouraged through zoom meetings when possible.

Invited Visitors are individuals whom the school has invited to be on campus for a specific purpose. Invited visitors will be limited, and must be approved by the site administrator.

Volunteers: A volunteer is an individual who applies for the opportunity to be a school/classroom volunteer (more frequent and longer time at the site). As we start the year, approved volunteers to serve as volunteers for outdoor activities with approval from site administrator.

All volunteers must complete the following **prior** to service:

- ✓ Complete the ICS Volunteer application.
- ✓ Review all protocols.
- ✓ Complete a Vaccine Attestation or Weekly COVID-19 diagnostic testing.
- ✓ Agree to wear a face covering while on district property, when indoors.
- ✓ Comply with all school protocols.

OTHER INFORMATION

In addition to the guidance provided, ICS continues the following practices for our school community.

HOME WELLNESS SCREENER

Monitoring the health and wellbeing of our students at home is key to keeping our school community safe.

COVID-19, per CDC guidelines. Having these symptoms is not, in and of itself a diagnosis of COVID-19. Families are encouraged to seek a medical opinion if their children exhibit these symptoms: fever, cough, shortness of breath or difficulty breathing, fatigue, muscle or body aches, headache, new loss of taste or smell, sore throat, congestion or runny nose, nausea or vomiting, diarrhea.

To conduct a wellness screening, you may take your child's temperature before sending them to school and screen for symptoms and exposure to COVID-19. Anyone with a fever of 100.4 degrees Fahrenheit or higher or with symptoms associated with COVID-19 should not go to school.

In addition, if someone is showing any signs of COVID-19, CDC advises individuals to seek emergency medical care immediately: trouble breathing, persistent pain or pressure in the chest, new confusion, inability to wake or stay awake, bluish lips or face. This list does not include all possible symptoms. CDC will continue to update this list as we learn more about COVID-19:

<https://www.cdc.gov/coronavirus/2019-ncov/symptoms-testing/symptoms.html>

ARRIVAL

- ICS will utilize main entry for arrival.
- School begins at 8:00am for all students in the 2021-22 school year.
- All students are required to wear a face mask to enter indoors, and masks are provided to students who need one.

BREAKFAST AT SCHOOL: Students will report to the cafeteria and may arrive as early as 7:30AM.

Please do NOT send children to school earlier than the breakfast time.

DISMISSAL

ICS will utilize multiple points of entry for dismissal.

- Teachers will keep their students in the classroom and monitor until picked-up by parents until 3:30PM. Except Fridays, students will be kept in the classroom until 12:30.
- Remaining students will be brought to the library at 3:30 M-Th, 12:30 on Fridays.

STUDENT DISMISSAL TIMES	
2:50PM	TK-8

Friday Early Dismissal TK-8 @12:15pm

SICK DURING SCHOOL DAY

- **If a student becomes sick during the school day, ICS will follow the Student Symptom Decision Tree provided by San Diego County, and the following steps will be taken:**
 - ✓ Student will be taken to the Sick/Isolation Room to be separated from others, and temperature and symptoms will be evaluated; student will be required to wear a face covering and remain in the isolation area until they are picked up by a parent or guardian immediately unless there is an alternative doctor's note on file for the symptoms, i.e.: allergies, asthma.
 - ✓ ICS students and staff with symptoms may not return to campus in person until they have met the CDPH criteria to return to school for those symptoms. ICS will follow the San Diego County Student Symptom Decision Tree.
- ICS designated a "Well Room" as well as a "Sick/Isolation Room" in the Main Office building. The Health Office will be used as the "Well Room," and other designated space in the Office will be used as the "Sick/Isolation Room."

SCHOOL EVENTS

ICS will continue to review COVID-19 data and conditions to provide opportunities for various school events such as assemblies and field trips in a safe manner.

ICS encourages parents to conduct as much business as possible through phone, email or zoom.

IEPS and parent conferences are encouraged via zoom meetings. For the beginning of the school year until further notice, invited visitors will be limited, and must be approved by a school site administrator.

PERSONAL PROTECTIVE EQUIPMENT (PPE) & OTHER PROTECTIVE GEAR

ICS has procured items that are considered essential equipment to ensure safeguards for staff and students. This includes Personal Protective Equipment (PPE) which is defined as equipment needed by staff to perform their job safely such as face coverings, hand sanitizers, disinfectants, gloves, etc. This also includes adjustments to facilities that respond to the unique needs of the moment.

STUDENT MATERIALS IN THE CLASSROOM

- Basic materials and supplies are provided. Students and staff will wash/sanitize hands before and after sharing materials. Students may bring approved school supplies to school if they choose.
- Students may bring backpacks and lunch bags to school each day.

STUDENT RESTROOMS

- Restrooms are cleaned throughout the day.
- Students are reminded to wash or sanitize hands before and after going to the bathroom, and to wear masks following CDPH's guidance.

DRINKING WATER

- Students are encouraged to use water bottle filling stations at the sites. Students are encouraged to bring their own water bottle to use with the water bottle filling stations.
- Water bottle filling stations are cleaned and sanitized each day.

TRANSPORTATION & FIELD TRIPS



- Masks are required for students and staff on the bus, and extra face coverings are available if needed.
- Health and hygiene are promoted. Students sanitize their hands before boarding the bus.
- Ventilation is provided with open windows as practicable.
- Staff clean and disinfect the interior of the bus after each route.

ADDITIONAL MEASURES

During an outbreak or major outbreak of COVID-19, additional measures and mitigation strategies may be implemented if determined necessary based on hazard assessments.

COVID-19 DESIGNEE

- ✓ Abdi Mohamud, School Operation Manager
(619) 265-2411 x 3065 Mohamud@iftincharter.net

III. REFERENCES & RESOURCES

California Department of Public Health (CDPH), COVID-19 Public Health Guidance for K-12 Schools in California, 2021-22 School Year. Published Aug. 2, 2021.

American Rescue Plan Act Elementary and Secondary School Relief Fund (ESSER III) Safe Return to In-Person Instruction Local Educational Agency Plan Template

Background on ESSER

The American Rescue Plan Act (ARP) signed into law on March 11, 2021, provided nearly \$122 billion for the Elementary and Secondary School Relief Fund (ESSER). ARP ESSER, also known as ESSER III, funds are provided to State educational agencies in the same proportion as each State received under Title I-A of the Elementary and Secondary Education Act (ESEA) in fiscal year (FY) 2020. The U.S. Department of Education (ED) published Interim Final Requirements (IFR) on April 22, 2021 requiring Local Educational Agencies (LEAs) receiving ESSER III funds to submit an LEA Plan for the Safe Return to In-Person Instruction and Continuity of Services. If an LEA had already developed a plan for safe return to in-person instruction and continuity of services prior to the enactment of ARP that meets the statutory requirements of section 2001(i) but did not address all of the requirements in the IFR, the LEA must revise and post its plan no later than six months after receiving its ESSER III funds. This applies even if an LEA has been operating full-time in-person instruction but does not apply to fully virtual schools and LEAs.

The IFR and ARP statute, along with other helpful resources, are located here:

- April 2021 IFR: <https://www.govinfo.gov/content/pkg/FR-2021-04-22/pdf/2021-08359.pdf>
- ARP Act text: <https://www.congress.gov/117/bills/hr1319/BILLS-117hr1319enr.pdf>
- Centers for Disease Control and Prevention (CDC) COVID-19 School Operation Guidance: https://www.cdc.gov/coronavirus/2019-ncov/community/schools-childcare/operation-strategy.html#anchor_1616080023247
- ED COVID-19 Handbook Volume I: <https://www2.ed.gov/documents/coronavirus/reopening.pdf>
- ED COVID-19 Handbook Volume II: <https://www2.ed.gov/documents/coronavirus/reopening-2.pdf>
- ESEA Evidence-Based Guidance: <https://oese.ed.gov/files/2020/07/guidanceeuseseeinvestment.pdf>
- ED FAQs for ESSER and Governor's Emergency Education Relief (GEER): https://oese.ed.gov/files/2021/05/ESSER.GEER_FAQs_5.26.21_745AM_FINALb0cd6833f6f46e03ba2d97d30aff953260028045f9ef3b18ea602db4b32b1d99.pdf

Purpose of the Template

The IFR issued by ED outlines several requirements for all LEAs that receive ESSER III funds, including that LEAs have in place a plan for ensuring safety during in-person instruction (either in-progress or planned) as well as ensuring continuity of services should the LEA or one or more of its schools be required to close temporarily for COVID-19-related public health reasons in the future. LEAs who had a plan in place by March 11, 2021, which incorporated opportunity for public comment and was posted publicly have six months from the date their ESSER III Assurances were completed to update and revise the plans to meet those requirements. Examples of previous plans that may be allowable would be a completed Cal/OSHA or Assembly Bill 86 plan, as long as it meets the requirements previously stated. LEAs which did not have a statutorily compliant plan in place as of March 11, 2021, must create and post this plan within 30 days of completing their ESSER III Assurances.

If you have questions as to which category applies to your LEA, please contact EmergencyServices@cde.ca.gov. Plans are required for all LEAs, regardless of operating status, unless an LEA is fully virtual with no physical location. All plans must be reviewed, and, as appropriate, revised, at least every six months to incorporate new or revised CDC guidance and other changed factors.

This template has been created to assist LEAs in the creation of these plans and to ensure all required elements are met. The following requirements and assurances pertain to both the statutory requirements and the IFR published by ED. LEAs may provide any additional information they believe are helpful in assessing their plan. If you have any questions, please contact EmergencyServices@cde.ca.gov.

LEA Plan for Safe Return to In-Person Instruction and Continuity of Services

LEA Name:

Iftin Charter School

Option for ensuring safe in-person instruction and continuity of services:
has developed a plan

1. Please choose one:

- ☒ The LEA had a plan, as of March 11, 2021, that is already compliant with the ARP statute and will review and, as appropriate, revise it every six months to take into consideration the additional requirements of the IFR; or

NOTE: If your LEA already has a compliant plan as of March 11, 2021, and has assured such by checking the box above, then you may skip questions 2-4 and complete the Assurance and Contact sections.

- ☐ The LEA has amended/created a plan compliant with the IFR using this template and has posted/will post it within 30 days of completing the ESSER III Assurances.

NOTE: If checking the box above that you are using this template to meet the 30 day plan requirements, you must respond to each question in the template.

Please note whether the LEA has a compliant plan and include a link to the plan, or acknowledge that the LEA is submitting a new plan and will post it within 30 days of receiving funds.

ICS Compliant Plan at: http://www.iftincharter.net/COVID-19_Prevention_Plan_2021.pdf

2. The LEA will maintain the health and safety of students, educators, and other school and LEA staff, and the extent to which it has adopted policies, and a description of any such policies, on each of the CDC's safety recommendations, including: universal and correct wearing of masks; modifying facilities to allow for physical distancing; handwashing and respiratory etiquette; cleaning and maintaining healthy facilities, including improving ventilation; contact tracing in combination with isolation and quarantine, in collaboration with the State, local, territorial, or Tribal health departments; diagnostic and screening testing; efforts to provide vaccinations to school communities; appropriate accommodations for children with disabilities with respect to health and safety policies; and coordination with State and local health officials.

Describe how the LEA will maintain, or continue to maintain, health and safety policies and procedures. Include a description of any adopted policies and procedures regarding the CDC's safety recommendations (or available LEA website links to such policies). Include descriptions of appropriate accommodations adopted and coordination efforts conducted with outside State and local health officials. Please include or describe current public health conditions, applicable State and local rules and restrictions, and other contemporaneous information that informs your decision-making process.

The following measures were implemented to ensure the health and safety of staff and students:

- *COVID-19 Screenings for staff and visitors entering the facility
- *PPE and other protective equipment were provided
- *ICS increased cleaning staff to ensure that meet the guidelines of San Diego County Public Health
- *ICS staff received regular professional development including COVID-19 prevention and awareness

3. The LEA will ensure continuity of services, including but not limited to services to address students' academic needs and students' and staff social, emotional, mental health and other needs, which may include student health and foodservices.

Describe how the LEA will ensure continuity of services in case isolation, quarantine, or future school closures are required, including how the LEA will meet the needs of students with disabilities and English learners.

ICSI is committed to ensuring the health, safety and well-being of all our students, families, teachers and community. We are also committed to ensuring that all of our students are receiving rigorous high quality instruction. ICS transitioned to a virtual academy that included

Academic program:

- Online educational instruction: daily lessons in core content
- Learning packets and additional materials and supports for EL and students with disabilities
- Individualized instruction to access learning
- Staff professional development on student engagement
- School psychologist to work with students who are experiencing social and/or emotional issues

Communications and Engagement:

- Additional instructional aides and utilize our bilingual staff to bridge communication between home and school
- Purchased Zoom licenses school-wide
- Streamlined our learning management system
- Developed a Support Request form and posted it on our website for families
- Providing parent meetings and training
- Daily and weekly calls to families that are not engaged in the virtual classrooms

Technology and Connectivity:

- Technology coordinator to address all technology/connectivity issues
- Purchased additional laptops and headphones to ensure each family had access to devices for virtual learning
- Purchased additional teacher laptops to ensure teachers are equipped with functioning devices needed to deliver instruction virtually
- Purchased document cameras and microphones for each teacher
- Purchased WiFi hotspots and charging adapters for families who can not obtain internet service
- Purchased WiFi extenders for staff and families in need to increase bandwidth and accessibility

One of the biggest challenges the COVID-19 school closures is continuation of our Special Education supports and services. We quickly shifted to a virtual model that ensured all special education students continued to receive their specialized academic services as well as their other services provided through our service providers.

ICS made every effort to provide special education and related services to the special education children in accordance with the child's individualized education program (IEP), consistent with a plan developed to meet the requirements. Special education students continue to receive services, through the Academic Support Zone program which allows all special education students to come onsite to continue their virtual learning, receive their services in-person when appropriate and receive additional academic support.

4. The LEA sought public comments in the development of its plan and took those comments into account in the development of its plan.

Describe the LEA's policy or practice that provided the public with an opportunity to provide comments and feedback and the collection process. Describe how any feedback was incorporated into the development of the plan.

ICS created Distance Learning resource page on the school website, to provide New COVID-19 updates. School messenger system and text messaging systems were used to deliver emergency communications to all stakeholders. ICS involved all stakeholder through online survey to receive input and recommendations. School closure and informational letters were also mailed home to share up to date resources.

In addition, the LEA provides the following assurances:

- ☒ The LEA has made (in the case of statutorily compliant plans) or will make (in the case of new plans) its plan publicly available no later than 30 days after receiving its ARP ESSER allocation.
 - o Please insert link to the plan:
<https://iftincharter.net/>
http://www.iftincharter.net/COVID-19_Prevention_Plan_2021.pdf
http://www.iftincharter.net/2020_Learning_Continuity_and_Attendance_Plan.pdf
http://www.iftincharter.net/COVID19_Preparedness_Response_Control_Plan.pdf
- ☒ The LEA sought public comment in the development of its plan and took those public comments into account in the development of its plan.
- ☒ The LEA will periodically review and, as appropriate revise its plan, at least every six months.
- ☒ The LEA will seek public comment in determining whether to revise its plan and, if it determines revisions are necessary, on the revisions it makes to the plan.
- ☒ If the LEA revises its plan, it will ensure its revised plan addresses each of the aspects of safety currently recommended by the Centers for Disease Control(CDC), or if the CDC has revised its guidance, the updated safety recommendations at the time the LEA is revising its plan.
- ☒ The LEA has created its plan in an understandable and uniform format.
- ☒ The LEA's plan is, to the extent practicable, written in a language that parent can understand, or if not practicable, orally translated.
- ☒ The LEA will, upon request by a parent who is an individual with a disability, provide the plan in an alternative format accessible to that parent.

The following person or persons is/are the appropriate contact person for any questions or concerns about the aforementioned plan.

Please list name(s), title(s), address, county, and contact information for the person or persons responsible for developing, submitting, and amending the LEA plan.

Maslah Yussuf, CEO, 5465 El Cajon Blvd. San Diego, CA 92115, 619-265-2411

Iftin Charter School Educator Effectiveness Block Grant 2021 Spending Plan for the 2021-2026 School Fiscal Years

The following plan has been explained in a public meeting of the governing board of Iftin Charter School (ICS) and recommended for adoption at a subsequent meeting:

ICS Governance Board Educator Effectiveness Spending Plan:

- Public Meeting Date: Friday, November 19, 2021
- Adoption Date:

Background: LEAs and State Special Schools that receive funding pursuant to California *Education Code (EC)* Section 41480(a) are required to develop and adopt a plan, by December 30, 2021, that delineates the expenditure of funds apportioned including the professional development of teachers, administrators, paraprofessionals and classified staff. The plan shall be presented in a public meeting of the governing board before its adoption in a subsequent meeting.

(a)(2) A school district, county office of education, charter school, or state special school may expend the funds received pursuant to this subdivision from the 2021–22 fiscal year to the 2025–26 fiscal year, inclusive. School districts, county offices of education, charter schools, and state special schools shall coordinate the use of any federal funds received under Title II of the federal Every Student Succeeds Act of 2015 (Public Law 114–95) to support teachers and administrators with the expenditure of funds received pursuant to this subdivision.

(b) A school district, county office of education, charter school, or state special school shall expend funds apportioned pursuant to this section to provide professional learning for teachers, administrators, paraprofessionals who work with pupils, and classified staff that interact with pupils, with a focus on any of the following areas:

(1) Coaching and mentoring of staff serving in an instructional setting and beginning teacher or administrator induction, including, but not limited to, coaching and mentoring solutions that address a local need for teachers that can serve all pupil populations with a focus on retaining teachers, and offering structured feedback and coaching systems organized around social-emotional learning, including, but not limited to, promoting teacher self-awareness, self-management, social awareness, relationships, and responsible decision-making skills, improving teacher attitudes and beliefs about one's self and others, and supporting learning communities for educators to engage in a meaningful classroom teaching experience.

(2) Programs that lead to effective, standards-aligned instruction and improve instruction in literacy across all subject areas, including English language arts, history-social science, science, technology, engineering, mathematics, and computer science.

(3) Practices and strategies that reengage pupils and lead to accelerated learning.

(4) Strategies to implement social-emotional learning, trauma-informed practices, suicide prevention, access to mental health services, and other approaches that improve pupil well-being.

(5) Practices to create a positive school climate, including, but not limited to, restorative justice, training around implicit bias, providing positive behavioral supports, multitiered systems of support, transforming a school's culture to one that values diverse cultural and ethnic backgrounds, and preventing discrimination, harassment, bullying, and intimidation based on actual or perceived characteristics, including disability, gender, gender identity, gender expression, language, nationality, race or ethnicity, religion, or sexual orientation.

(6) Strategies to improve inclusive practices, including, but not limited to, universal design for learning, best practices for early identification, and development of individualized education programs for individuals with exceptional needs.

(7) Instruction and education to support implementing effective language acquisition programs for English learners, which may include integrated language development within and across content areas, and building and strengthening capacity to increase bilingual and biliterate proficiency.

If this charter school will receive the following amount:

Educator Effectiveness Funding: \$120,790.00

ICS will utilize the EEF as follows:

- A) Beginning teacher and administrator support and mentoring, including, but not limited to, programs that support new teacher and administrator ability to teach and lead effectively and to meet induction requirements:

Est. Expenditure (%)	Est. Expenditure Amount (\$)	Number of Teachers	Number of Classified	Number of Admin	Actual Expenditure (\$)
20%	\$24,158	5	0	2	

- B) Provide opportunities for release days and substitute coverage for on and off site:

Est.	Est.	Number of	Number of	Number of	Actual
------	------	-----------	-----------	-----------	--------

Expenditure (%)	Expenditure Amount (\$)	Teachers	Classified	Admin	Expenditure (\$)
15%	\$18,118.5	24	0	3	

- C) Provide professional development in programs that lead to effective, standards-aligned instruction and improve in literacy across all subject areas and practices and strategies that reengage pupils and lead to accelerated learning to both certificated and instructional aides:

Est. Expenditure (%)	Est. Expenditure Amount (\$)	Number of Teachers	Number of Classified	Number of Admin	Actual Expenditure (\$)
30%	\$36,237	24	16	2	

- D) Provide training on practices that create a positive school climate, including, but not limited to, restorative justice, training around implicit bias, microaggressions, providing positive behavioral supports, multitiered systems of support, strategies that improve inclusive practices such universal design for learning, best practices for early identification, and development of individualized education programs for individuals with exceptional needs as well as instruction and education to support implementing effective language acquisition programs for English language learners:

Est. Expenditure (%)	Est. Expenditure Amount (\$)	Number of Teachers	Number of Classified	Number of Admin	Actual Expenditure (\$)
35%	\$42,276.5	24	16	4	